

**FOR SALE | \$575,000 OR FOR LEASE | \$18.00/SF NNN**

Rarely Available Medical Office Condo in the Heart of Eagle

951 E. Plaza Drive, Suite 140 | Eagle, Idaho 83616

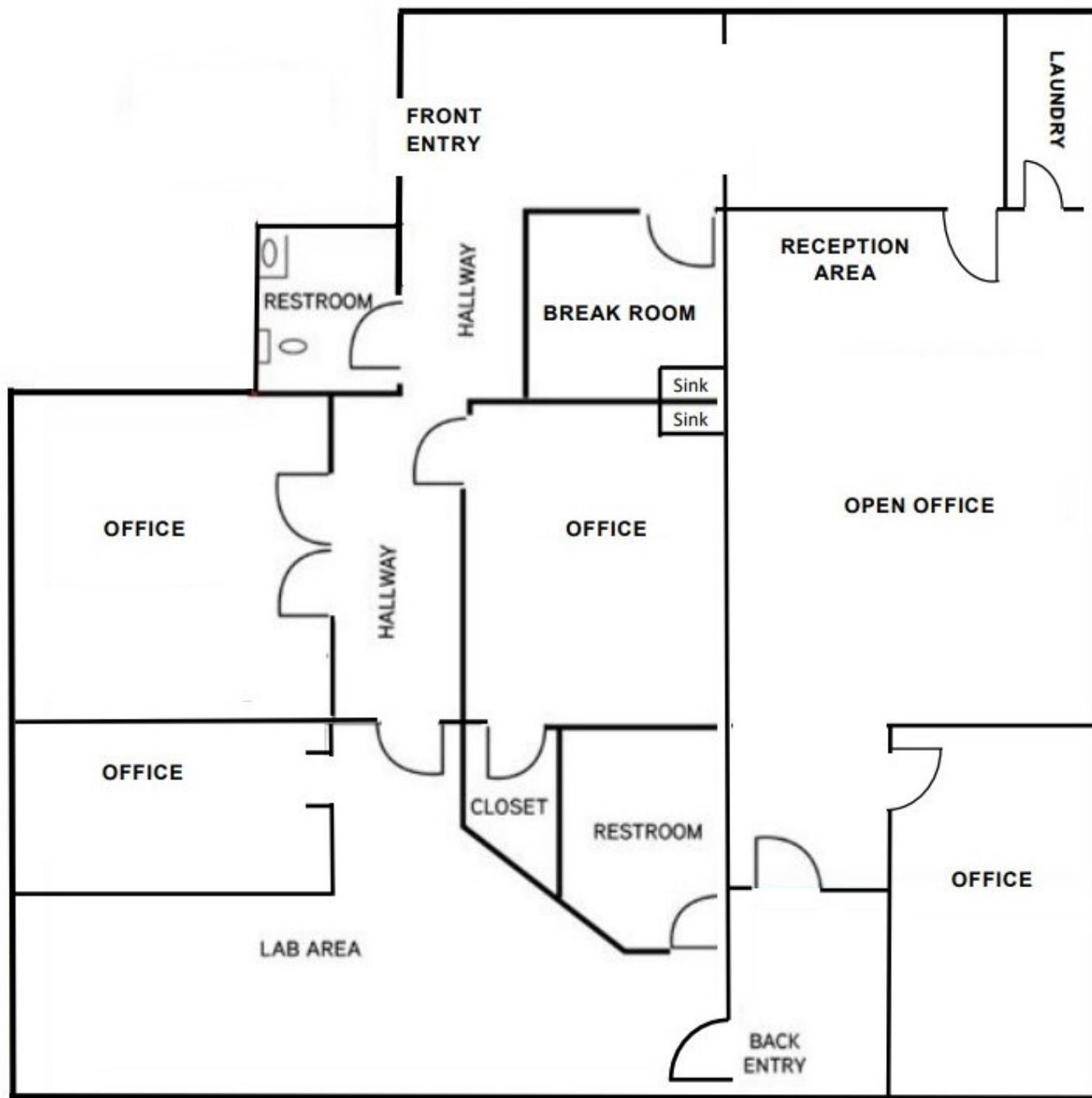


**Chrissy Smith | 208.720.2981 | [csmith@cbboise.com](mailto:csmith@cbboise.com)**



**COLDWELL BANKER  
COMMERCIAL**  
TOMLINSON

The information contained herein is from sources deemed reliable. All information should be verified prior to purchase or lease.



**For Sale | \$575,000**

**For Lease | \$18.00/SF NNN**

⇒ Lease Terms: 3 - 5 years

⇒ Est. NNN's: \$6.10/SF

### Property Summary

- 951 E. Plaza Drive, Suite 140
- Space Size: 1,967 SF
- Space Type: Medical Office
- Vacant and Ready to Occupy
- APN: #R3073710050

**Contact Listing Agent to  
Schedule a Tour**

**Chrissy Smith | 208.720.2981**

[csmith@cbboise.com](mailto:csmith@cbboise.com)



**COLDWELL BANKER  
COMMERCIAL  
TOMLINSON**



951 E. Plaza Drive  
Suite 140

**Chrissy Smith** | 208.720.2981  
[csmith@cbboise.com](mailto:csmith@cbboise.com)



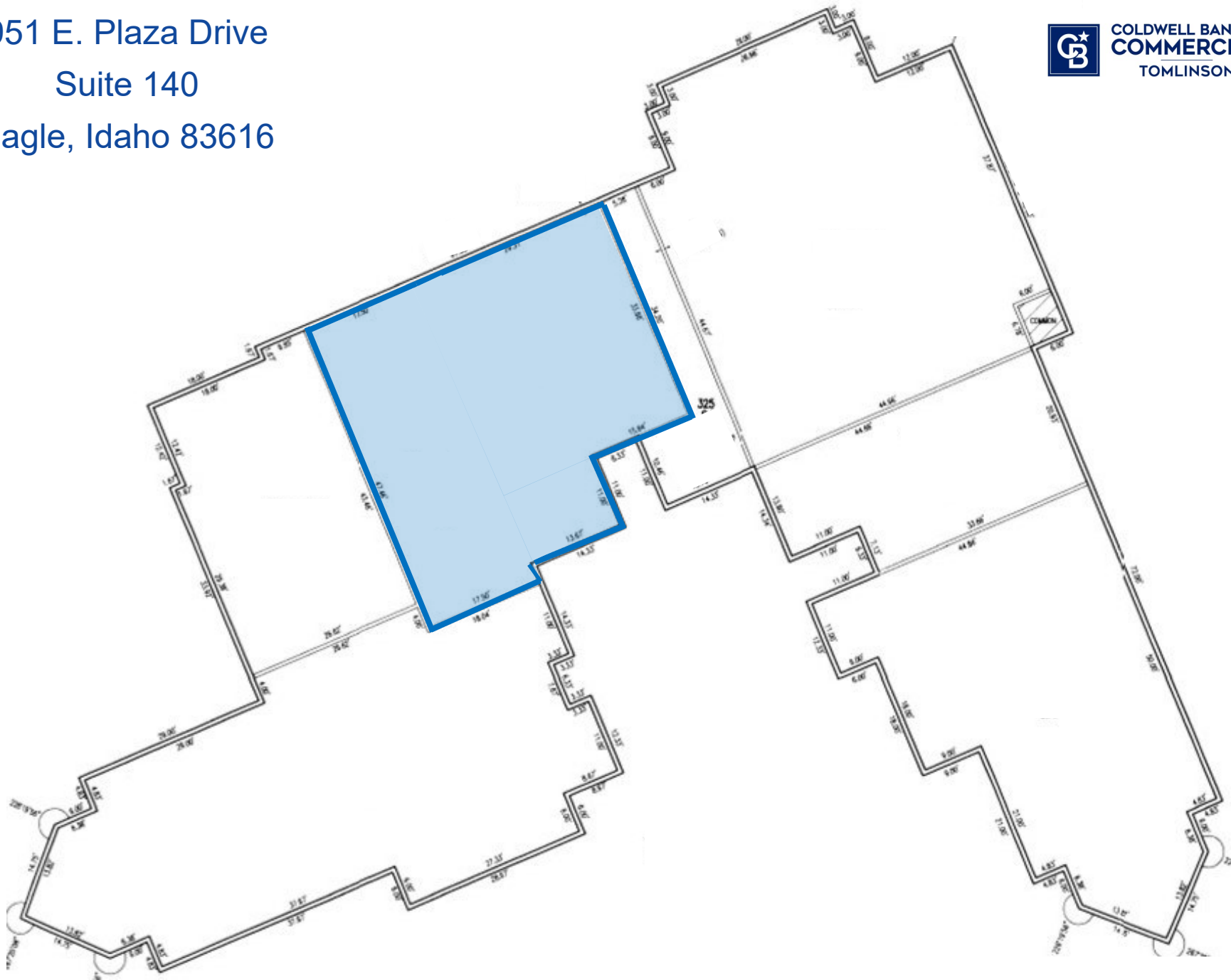


951 E. Plaza Drive  
Suite 140

**Chrissy Smith** | 208.720.2981  
[csmith@cbboise.com](mailto:csmith@cbboise.com)



951 E. Plaza Drive  
Suite 140  
Eagle, Idaho 83616



**Chrissy Smith | 208.720.2981 | [csmith@cbboise.com](mailto:csmith@cbboise.com)**

The information contained herein is from sources deemed reliable. All information should be verified prior to purchase or lease.

951 E. Plaza Drive | Eagle, Idaho 83616



**Chrissy Smith** | 208.720.2981 | [csmith@cbboise.com](mailto:csmith@cbboise.com)



The information contained herein is from sources deemed reliable. All information should be verified prior to purchase or lease.