

# FOR LEASE | 1,967 SF Medical Office | \$18.00/SF/NNN

Rarely Available Medical Office Condo in the Heart of Eagle

951 E. Plaza Drive, Suite 140 | Eagle, Idaho 83616

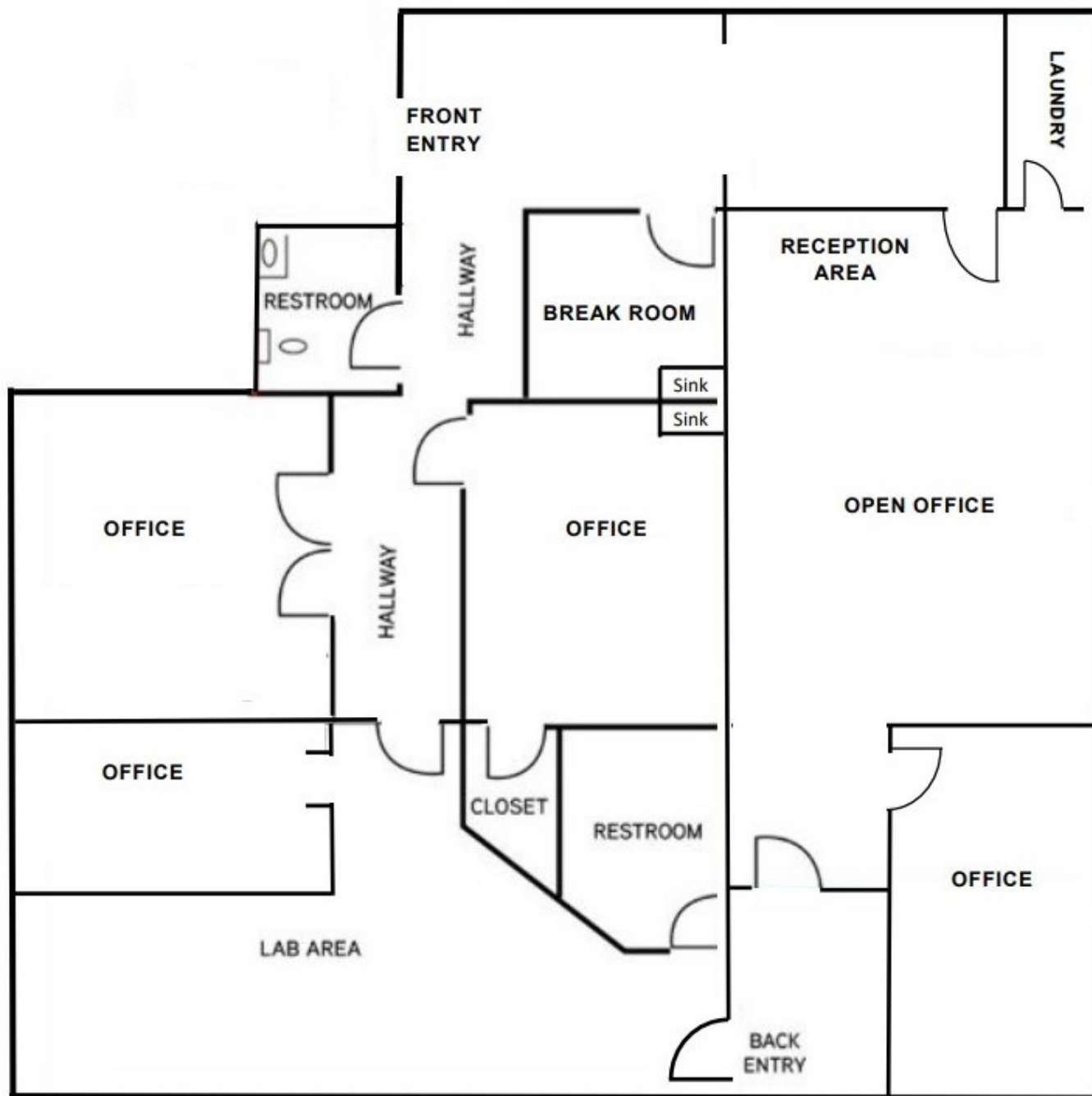


**Chrissy Smith** | 208.720.2981 | [csmith@cbboise.com](mailto:csmith@cbboise.com)



**COLDWELL BANKER  
COMMERCIAL**  
TOMLINSON

The information contained herein is from sources deemed reliable. All information should be verified prior to purchase or lease.



## LEASE SUMMARY

- 951 E. Plaza Drive, Suite 140
- Lease Rate: \$18.00/SF/NNN
- Lease Terms: 3 - 5 years
- Est. NNN's: \$6.10/SF
- Space Size: 1,967 SF
- Space Type: Medical Office
- Availability: September 1, 2023
- APN: #R3073710050

**Contact Listing Agent to  
Schedule a Tour**

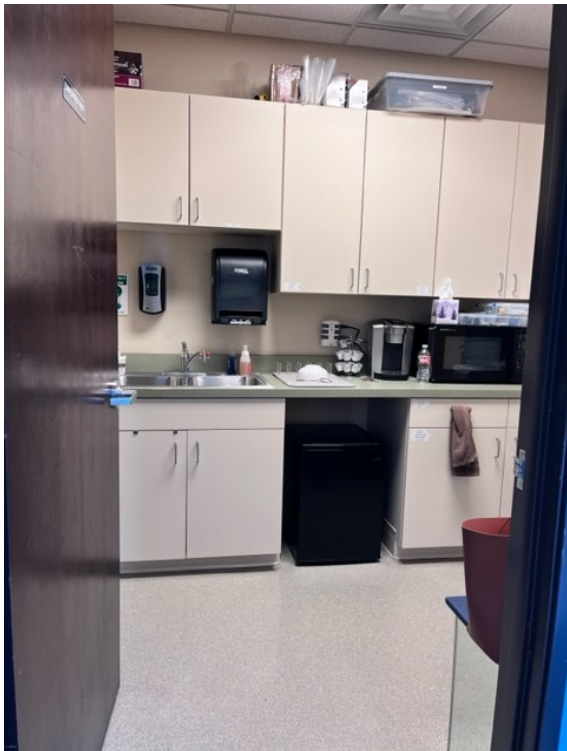
**Chrissy Smith**

208.720.2981

[csmith@cbboise.com](mailto:csmith@cbboise.com)



**COLDWELL BANKER  
COMMERCIAL  
TOMLINSON**



**951 E. Plaza Drive, Suite 140 | Eagle, Idaho**

**Chrissy Smith**

208.720.2981

[csmith@cbboise.com](mailto:csmith@cbboise.com)

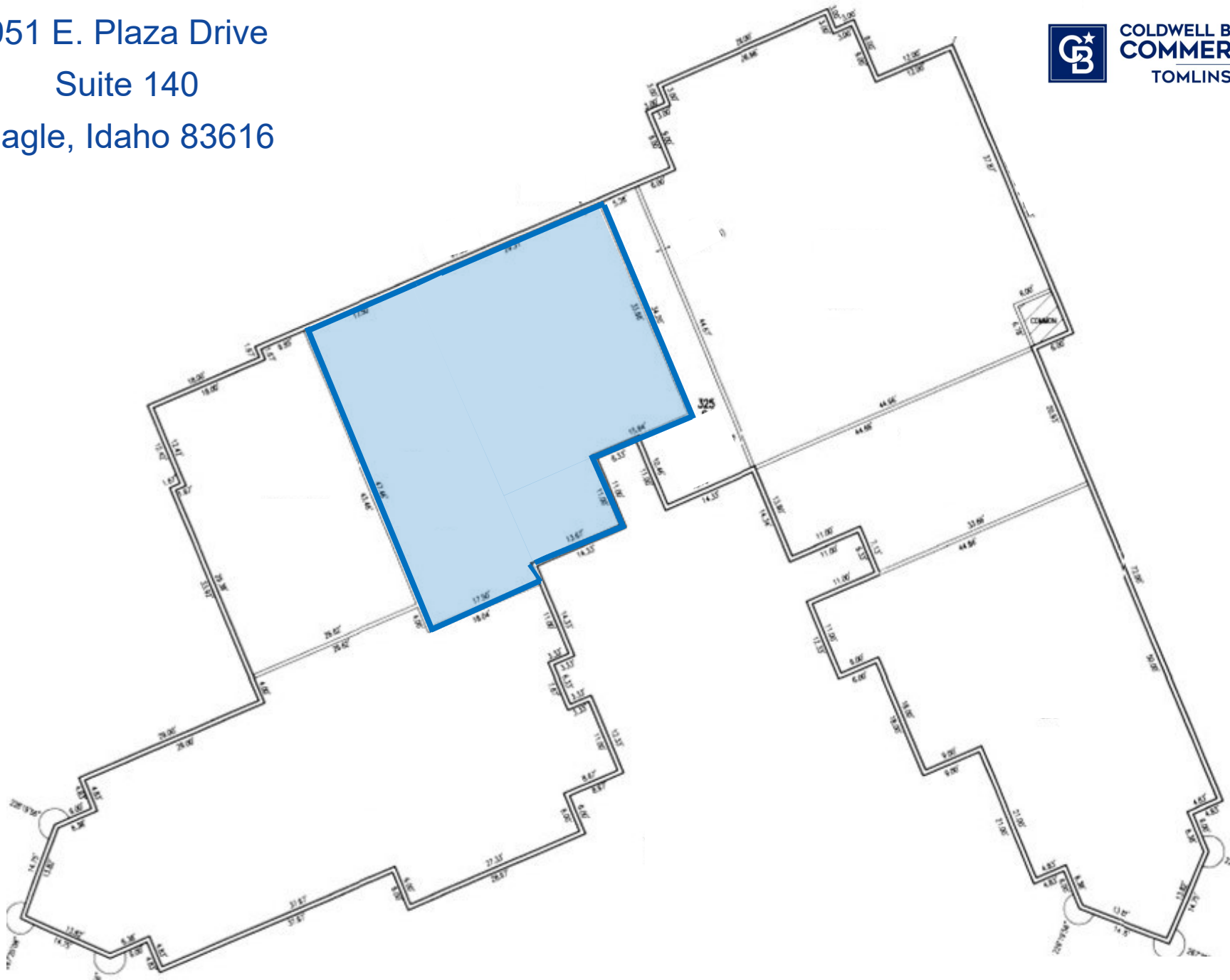


**COLDWELL BANKER  
COMMERCIAL  
TOMLINSON**

The information contained herein is from sources deemed reliable. All information should be verified prior to purchase or lease.



951 E. Plaza Drive  
Suite 140  
Eagle, Idaho 83616



**Chrissy Smith | 208.720.2981 | [csmith@cbboise.com](mailto:csmith@cbboise.com)**

The information contained herein is from sources deemed reliable. All information should be verified prior to purchase or lease.

## 951 E. Plaza Drive | Eagle, Idaho 83616



**Chrissy Smith** | 208.720.2981 | [csmith@cbboise.com](mailto:csmith@cbboise.com)



The information contained herein is from sources deemed reliable. All information should be verified prior to purchase or lease.