

FOR LEASE | 5,432 SF SINGLE TENANT OFFICE BUILDING

\$14.50/SF/NNN | Available May 1st 2023

1850 - 1870 North Lakes Place | Meridian, ID 83642

Please Do Not Disturb Tenant



Chrissy Smith | 208.720.2981 | csmith@cbboise.com

Rick McGraw | 208.880.8889 | rickmcgraw54@gmail.com

Investment | Industrial | Land | Office | Retail

The information contained herein is from sources deemed reliable. All information should be verified prior to purchase or lease.

FOR LEASE | 1850 - 1870 North Lakes Place | Meridian, ID 83642

SUMMARY

- Single Tenant Office Building
- Available May 1st, 2023
- Building Size: 5,432 SF
- Lease Rate: \$14.50/SF/NNN
- Estimated 2023 NNN is \$3.64/SF
- Lease Terms: Negotiable
- Land Size: .20 Acres
- Year Built: 2006
- Zoned: R-40

Chrissy Smith

208.720.2981

csmith@cbboise.com

Rick McGraw

208.880.8889

rickmcgraw54@gmail.com



HIGHLIGHTS

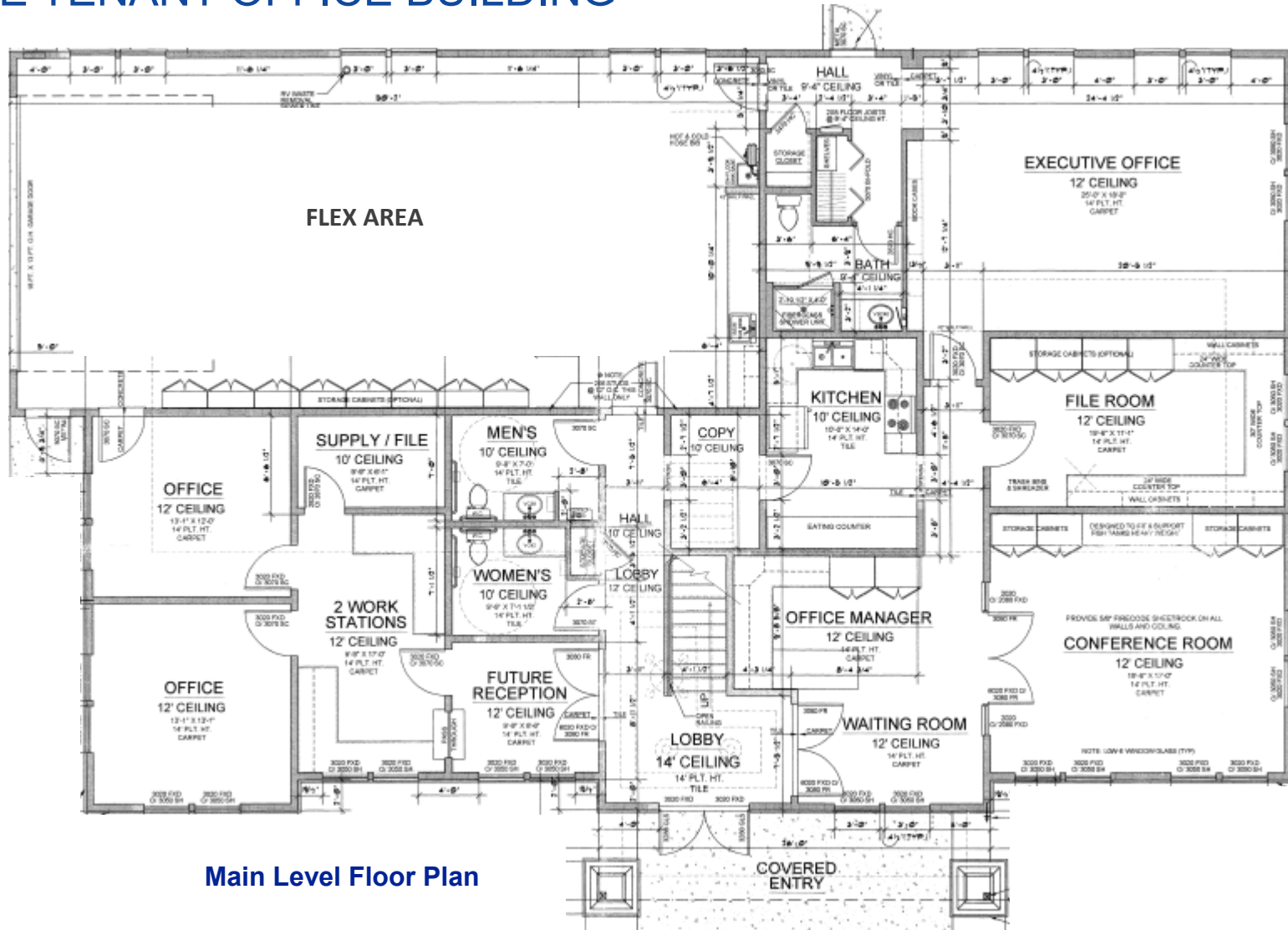
- Building is Located in a Professional Office Complex
- Incredible Finish Work, Design and Floor Plan
- Features: Upstairs Office Area
 - Flex Area
 - Professional Reception & Lobby Area
 - 2 Common Bathrooms & A Bathroom with shower on Main Level

Please Do Not Disturb Tenant



FOR LEASE | 1850 - 1870 North Lakes Place | Meridian, ID 83642

SINGLE TENANT OFFICE BUILDING



Main Level Floor Plan

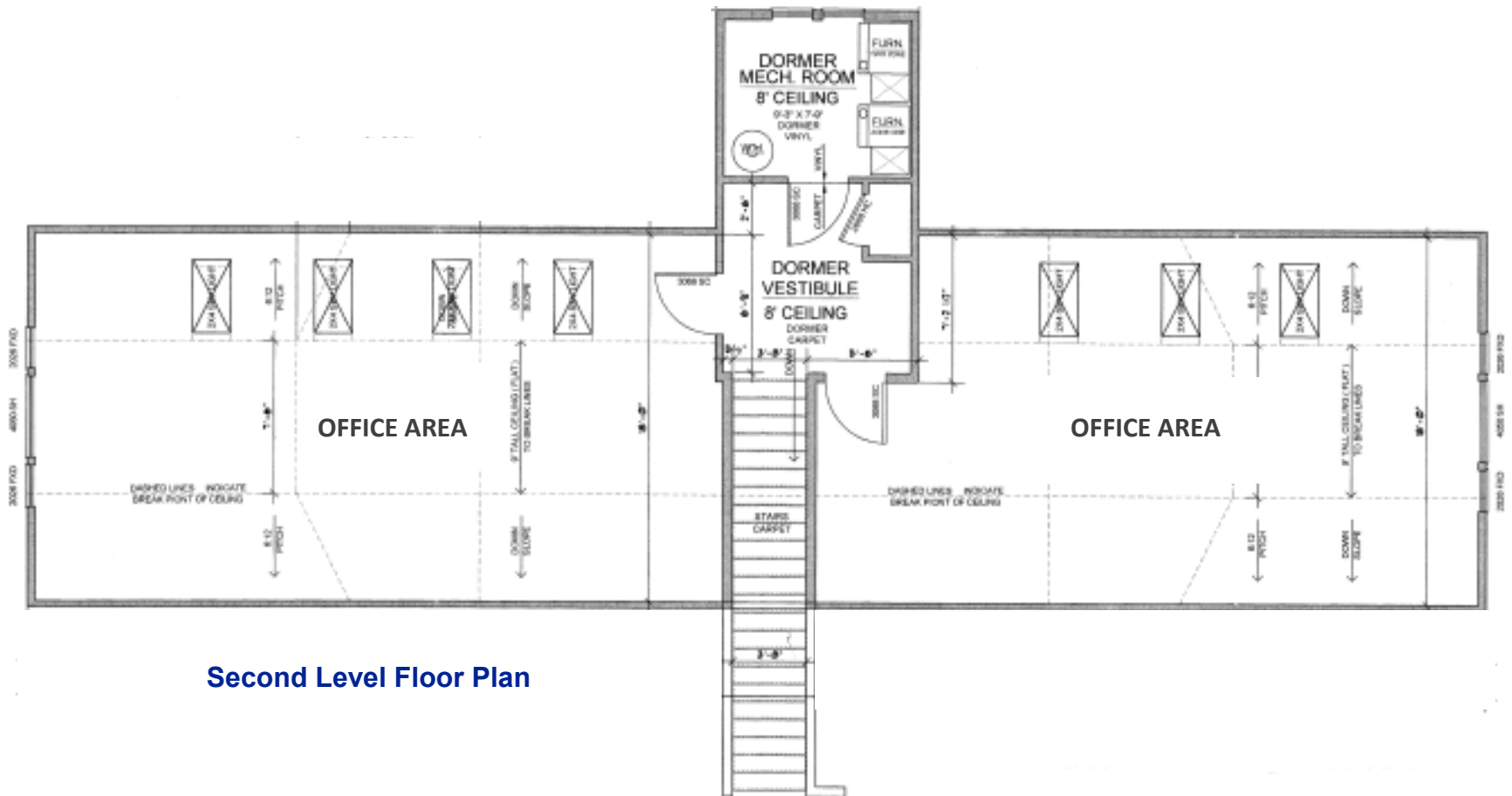
Rick McGraw
208.880.8889
rickmcgraw54@gmail.com



Chrissy Smith
208.720.2981
csmith@cbboise.com

FOR LEASE | 1850 - 1870 North Lakes Place | Meridian, ID 83642

SINGLE TENANT OFFICE BUILDING



Second Level Floor Plan

Rick McGraw

208.880.8889

rickmcgraw54@gmail.com

Chrissy Smith

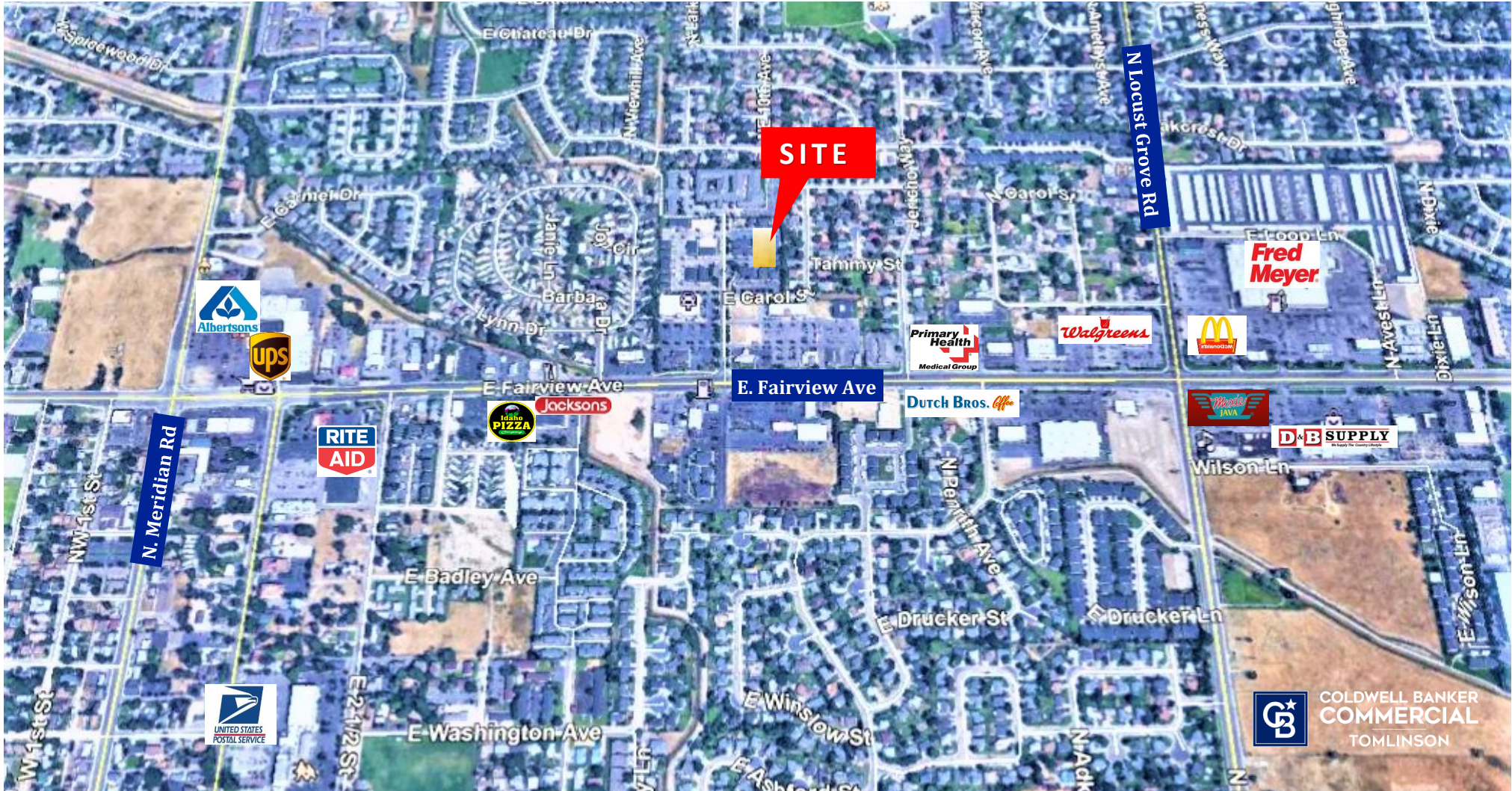
208.720.2981

csmith@cbboise.com



FOR LEASE | 5,432 SF SINGLE TENANT OFFICE BUILDING

1850 - 1870 North Lakes Place | Meridian, ID 83642



Chrissy Smith | 208.720.2981 | csmith@cbboise.com

Rick McGraw | 208.880.8889 | rickmcgraw54@gmail.com

Investment | Industrial | Land | Office | Retail

The information contained herein is from sources deemed reliable. All information should be verified prior to purchase or lease.