



1345 West Overland Road / Meridian, Idaho 83642

**FOR SALE**  
**PRECISION RV STORAGE COMPLEX**  
**OFFERED FOR \$8,295,000**

Rick McGraw  
208.880.8889  
rickmcgraw54@gmail.com



The information contained herein is from sources deemed reliable. All information should be verified prior to purchase or lease.

**FOR SALE**



## Property Summary

- Price: \$8,295,000
- 29,600 SF Indoor RV Storage
- 3,000 SF Office
- 4.143 Acres
- Fenced Yard with Automatic Gate
- 24 Hour Security
- Business Opened November 2021

## Property Information...

- Precision RV Storage is located directly across from Camping World and Bish's RV Center, the two largest RV Dealers in Idaho.
- Excellent location with easy access to I-84 for Client access.
- 29,600 SF of enclosed and climate controlled storage with waiting list.
- Outdoor Uncovered Storage

1345 W. Overland Road | Meridian ID 83642

## Precision RV Storage Hours of Operation

- Monday - Friday 9am to 4pm
- Saturday 9am to 3pm
- Sunday Closed

### ⇒ Exterior Video

- <https://www.aerial.com>

### ⇒ Interior Video

- <https://www.interiorvideo.com>

### ⇒ Precision RV Storage Website

- <https://www.precisionrvstorage.com>

**Rick McGraw | 208.880.8889 | rickmcgraw54@gmail.com**

The information contained herein is from sources deemed reliable. All information should be verified prior to purchase or lease.



# FOR SALE | Precision RV Storage Complex | \$8,295,000

1345 West Overland Road | Meridian, Idaho 83642



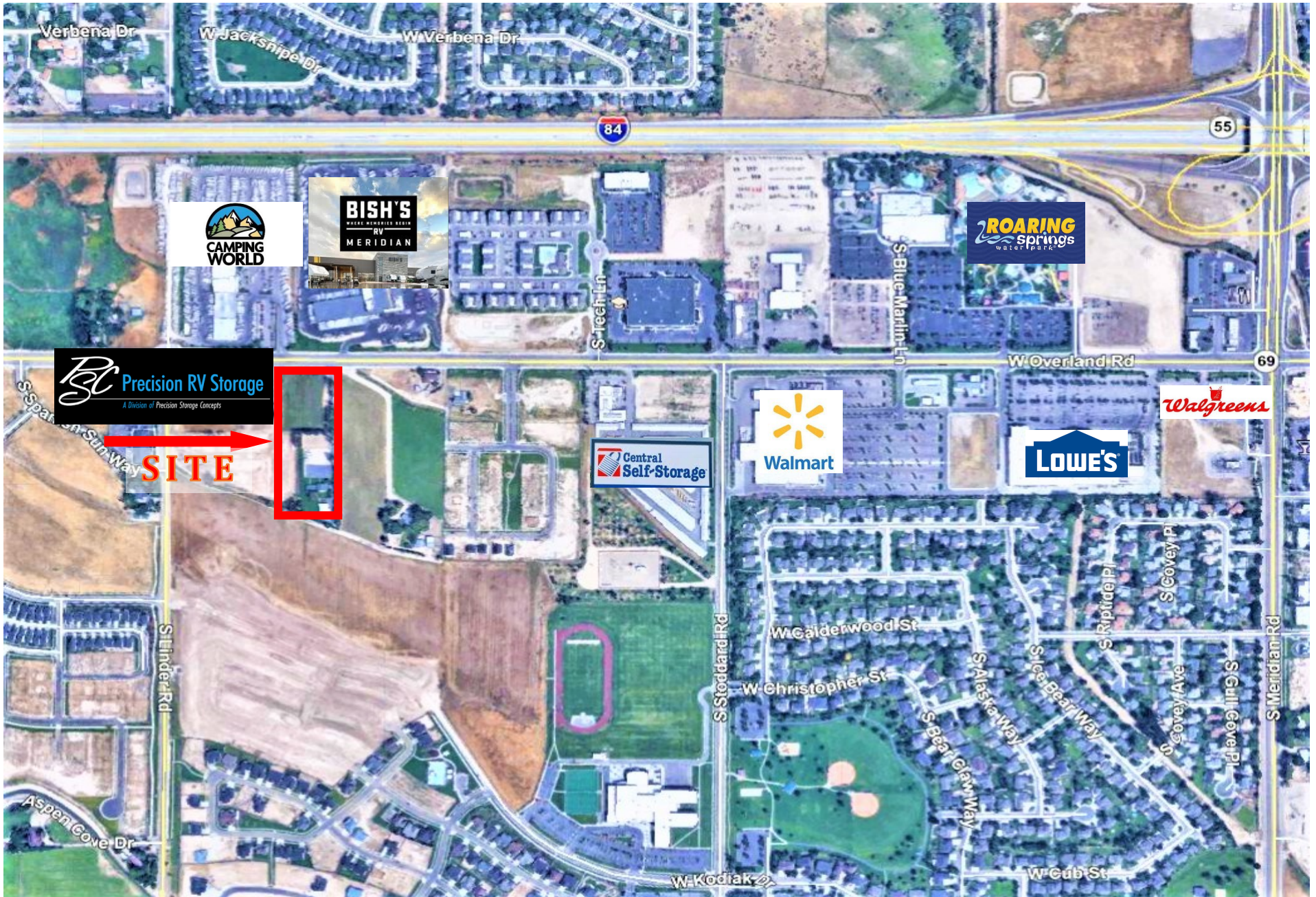
Rick McGraw | 208.880.8889 | [rickmcgraw54@gmail.com](mailto:rickmcgraw54@gmail.com)



The information contained herein is from sources deemed reliable. All information should be verified prior to purchase or lease.



# FOR SALE | 1345 West Overland Road | Meridian, Idaho 83642



Rick McGraw | 208.880.8889 | rickmcgraw54@gmail.com



The information contained herein is from sources deemed reliable. All information should be verified prior to purchase or lease.