



FOR LEASE

FALL RIVER BUSINESS PARK

1) 849 S. Rising Sun
Drive

Retail / \$16.95 SF /
NNN

Accommodate Building
up to 19,010 SF

2) 910 S. Rising Sun
Drive

Office / \$15.95 SF /
NNN

Accommodate Building
up to 2,000 SF

3) 925 S. Rising Sun
Drive

Directions: From I-84. Take Karcher Interchange, West on Highway 55, South on Middleton Road to Fall River.

Rick McGraw 208.880.8889 rickmcgraw54@gmail.com

The information contained herein is from sources deemed reliable. All information should be verified prior to purchase or lease.



**COLDWELL
BANKER
TOMLINSON**

FALL RIVER BUSINESS PARK

SITE PLAN



HIGHLIGHTS

- ◆ Fall River Business Park is located SE Corner of Lake Lowell Ave and Middleton Road
- ◆ Uses in Complex include Retail and Office
- ◆ Existing Businesses include Idaho Fitness Factory, Premier Dental and Garden of Learning Day Care. New Orthodontist to start construction in 2020
- ◆ Surrounded by Upscale Residential Neighborhoods and Adjacent Golf Course

THE MCGRAW GROUP



Presented by The McGraw Group



Rick McGraw

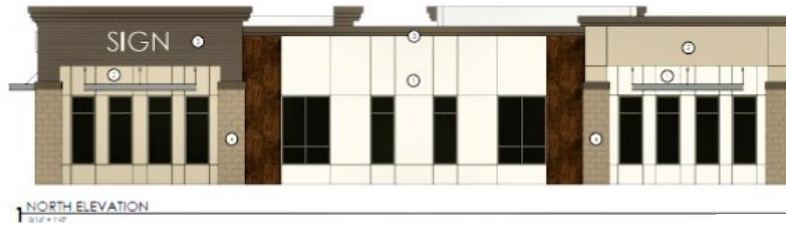
208.880.8889

rickmcgraw54@gmail.com

FALL RIVER BUSINESS PARK RETAIL CONCEPTUAL

Uses in Complex
include
Retail and Office

Multiple Lots
Available



Presented by
The McGraw Group

Rick McGraw
208.880.8889

rickmcgraw54@gmail.com



FALL RIVER BUSINESS PARK RETAIL CONCEPTUAL



THE MCGRAW GROUP



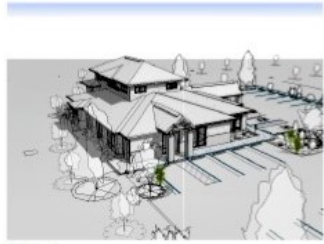
*Presented by
The McGraw Group*

**Rick McGraw
208.880.8889**

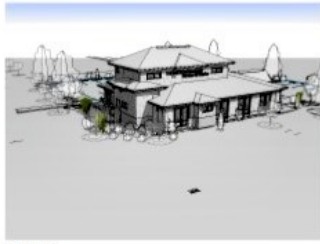
rickmcgraw54@gmail.com



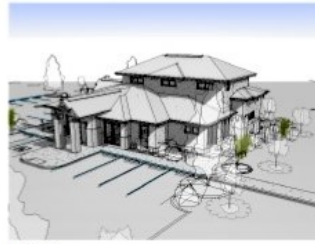
FALL RIVER BUSINESS PARK OFFICE CONCEPTUAL



3D View 8



3D View 7



3D View 6



3D View 5



THE MCGRAW GROUP



Presented by
The McGraw Group

Rick McGraw
208.880.8889

rickmcgraw54@gmail.com



FALL RIVER BUSINESS PARK

South Site Plan

Flex - Storage and Sport Building

Up To 8,500 SF



Presented by
The McGraw Group

Rick McGraw
208.880.8889

rickmcgraw54@gmail.com



FALL RIVER BUSINESS PARK



Presented by

The McGraw Group

Rick McGraw

208.880.8889

rickmcgraw54@gmail.com

THE MCGRAW GROUP



COLDWELL
BANKER
COMMERCIAL