

FOR LEASE

**AIRPORT BUSINESS
PARK**

**6,207 SF
Professional Office
Building**

\$12.95 SF / NNN

**2700 W. Airport Way
Boise, Idaho**

**COLDWELL
BANKER**
TOMLINSON GROUP
COMMERCIAL



Presented by **The McGraw Group**

Rick McGraw 208.880.8889 rickmcgraw54@gmail.com
Chrissy Smith 208.720.2981 csmith@coldwellbankertg.com

Investment | Industrial | Land | Office | Retail

The information contained herein is from sources deemed reliable. All information should be verified prior to purchase or lease.

AIRPORT BUSINESS PARK

2700 West Airport Way Boise, Idaho

**VALUE**

- \$12.95 SF / NNN
- Available Jan. 1, 2020
- Main Level: 4,809 SF
Lower Level: 1,398 S
- Year Built: 1993
- Parking: 25+ Stalls

HIGHLIGHTS

- ◆ Versatile Mix of Private and Open Office Space
- ◆ Extra Large Conference Room
- ◆ Break Room on each level
- ◆ Well-Maintained Building with Updated Finishes
- ◆ Adjacent to Boise Airport, Hotels and Restaurants
- ◆ Minutes from Downtown Boise

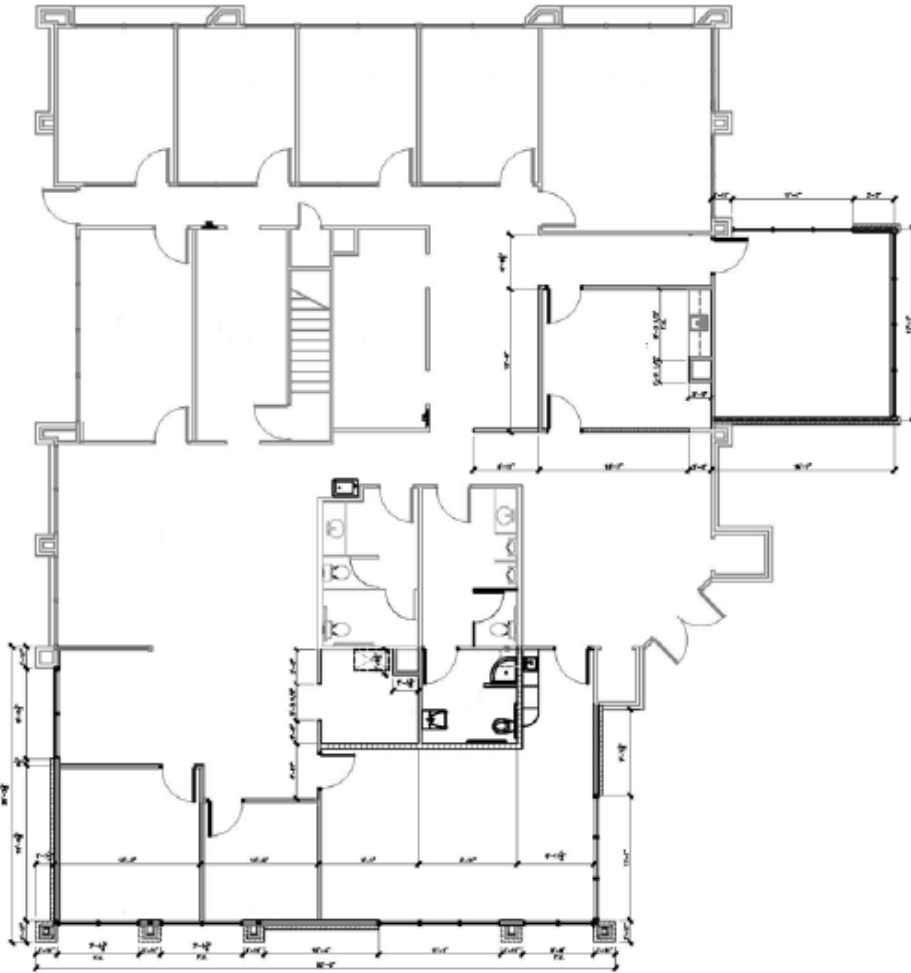
Rick McGraw 208.880.8889 rickmcgraw54@gmail.comChrissy Smith 208.720.2981 csmith@coldwellbankertg.com

The information contained herein is from sources deemed reliable. All information should be verified prior to purchase or lease.

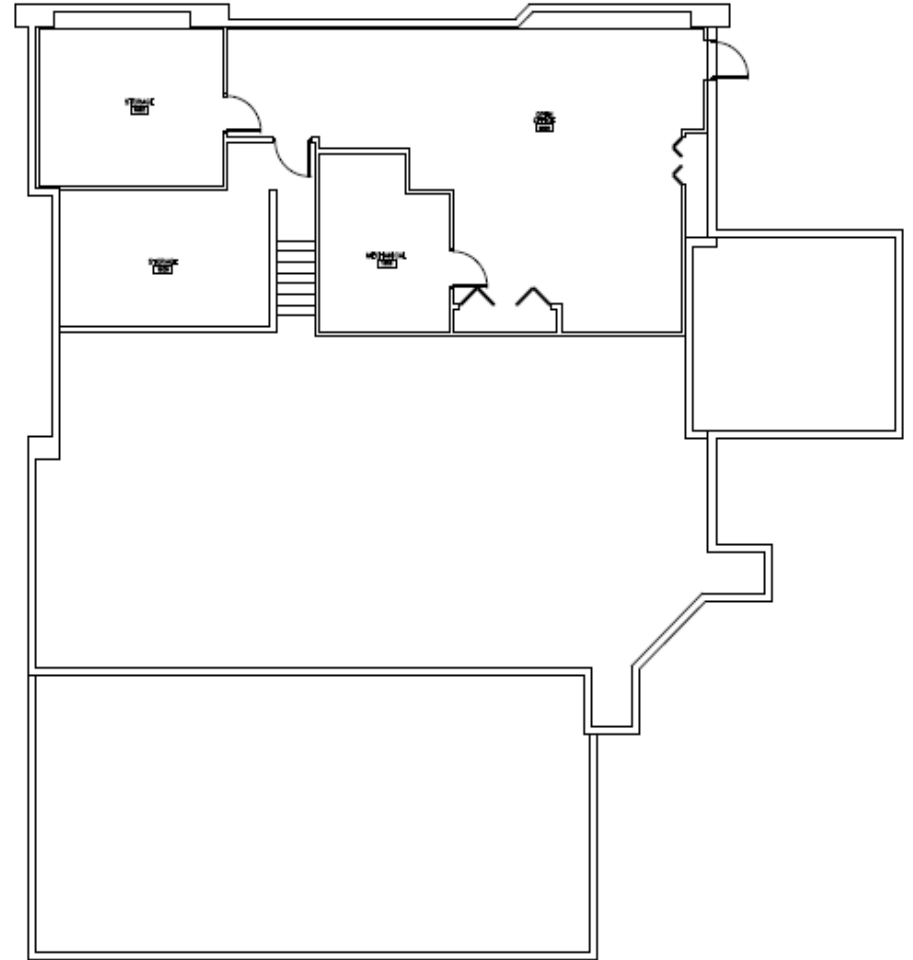
AIRPORT BUSINESS PARK

2700 West Airport Way Boise, Idaho

MAIN FLOOR



Lower Level



Rick McGraw 208.880.8880 rickmcgraw54@gmail.com

Chrissy Smith 208.720.2981 csmith@coldwellbankertg.com

The information contained herein is from sources deemed reliable. All information should be verified prior to purchase or lease.

AIRPORT BUSINESS PARK

2700 West Airport Way Boise, Idaho



Lobby



Reception Area



Bullpen



Conference Rm



Office



Office



Conference Rm



Hallway



Main Level Kitchen



Lower Level Kitchen



Restroom



Restroom

Rick McGraw 208.880.8880 rickmcgraw54@gmail.com

Chrissy Smith 208.720.2981 csmith@coldwellbankertg.com

The information contained herein is from sources deemed reliable. All information should be verified prior to purchase or lease.

AIRPORT BUSINESS PARK

2700 West Airport Way Boise, Idaho



Rick McGraw 208.880.8880 rickmcgraw54@gmail.com

Chrissy Smith 208.720.2981 csmith@coldwellbankertg.com

The information contained herein is from sources deemed reliable. All information should be verified prior to purchase or lease.