

For Lease

**Office/Retail or
Flex Space**

\$12.50 / SF

**Two Separate Office Condos
Available**

***9167 W. State Street
1,992 SF***

***9169 W. State Street
1,992 SF***



Rick McGraw
208.880.8889
rickmcgraw54@gmail.com



Chrissy Smith
208.720.2981
csmith@coldwellbankertg.com



Investment | Industrial | Land | Office | Retail



The information contained herein is from sources deemed reliable. All information should be verified prior to purchase or lease.

Office / Retail or Flex Space**1,992 Square Feet - \$12.50 / SF****PROFILE**

- Address: 9167 W. State St.
9169 W. State St.
- Square Footage for Both Units:
 - ⇒ Main Level: 1,500 SF
 - ⇒ Mezzanine: 427 SF
- Year Built: 1999
- Located in the Arney Lane Plaza

VALUE

- Lease Rate: \$12.50/SF
- Lease Type: Gross Lease
- Lease Terms: 3 Years minimal
- Tenant Pays all Utilities
- Call Agents for Availability

HIGHLIGHTS

- ⇒ Each Condo has the following:
 - ◆ Open Main Level with Mezzanine on Upper Level
 - ◆ 10 X 10 Roll-Up Door in Rear
 - ◆ Front and Rear Parking
 - ◆ State Street Frontage
 - ◆ Traffic Counts with 33,000+ Cars Per Day

**Rick McGraw 208.880.8889 rickmcgraw54@gmail.com****Chrissy Smith 208.720.2981 csmith@coldwellbankertg.com****Presented by The McGraw Group**

FOR LEASE 9167 W. State Street and 9169 W. State Street Garden City, Idaho

TOMLINSON GROUP

COMMERCIAL

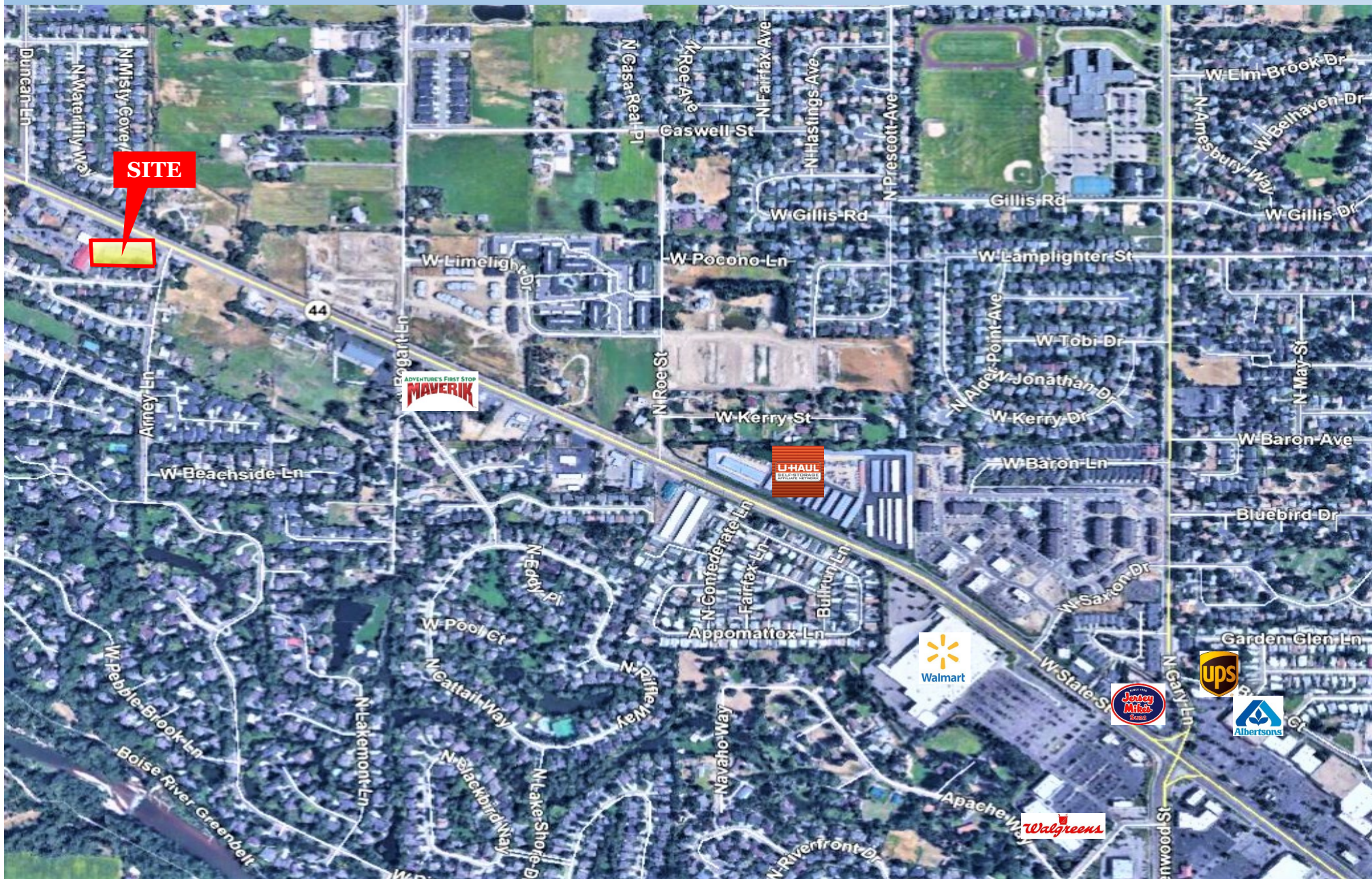


Rick McGraw 208.880.8889 rickmcgraw54@gmail.com

Chrissy Smith 208.720.2981 csmith@coldwellbankertg.com

***Presented by* The McGraw Group**

The information contained herein is from sources deemed reliable. All information should be verified prior to purchase or lease.



Presented by The McGraw Group

The information contained herein is from sources deemed reliable. All information should be verified prior to purchase or lease.