

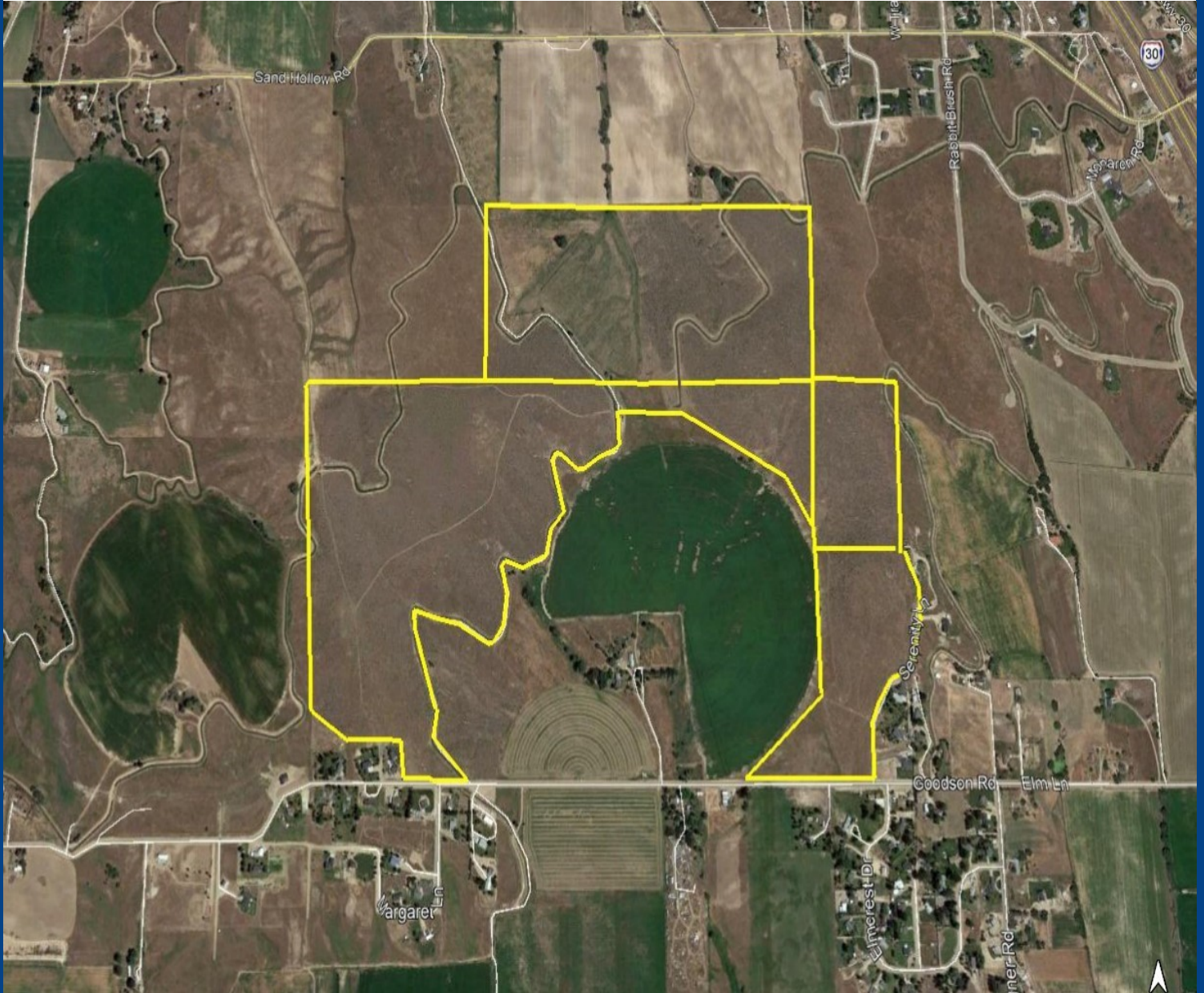
**COLDWELL  
BANKER** 

**TOMLINSON GROUP**

COMMERCIAL

# 221.61 Acres Stadium Subdivision Caldwell, Idaho

## OFFERED FOR \$3,195,000



**Rick McGraw 208.880.8889 [rickmcgraw54@gmail.com](mailto:rickmcgraw54@gmail.com)**

**Investment | Industrial | Land | Office | Retail**

The information contained herein is from sources deemed reliable. All information should be verified prior to purchase or lease.



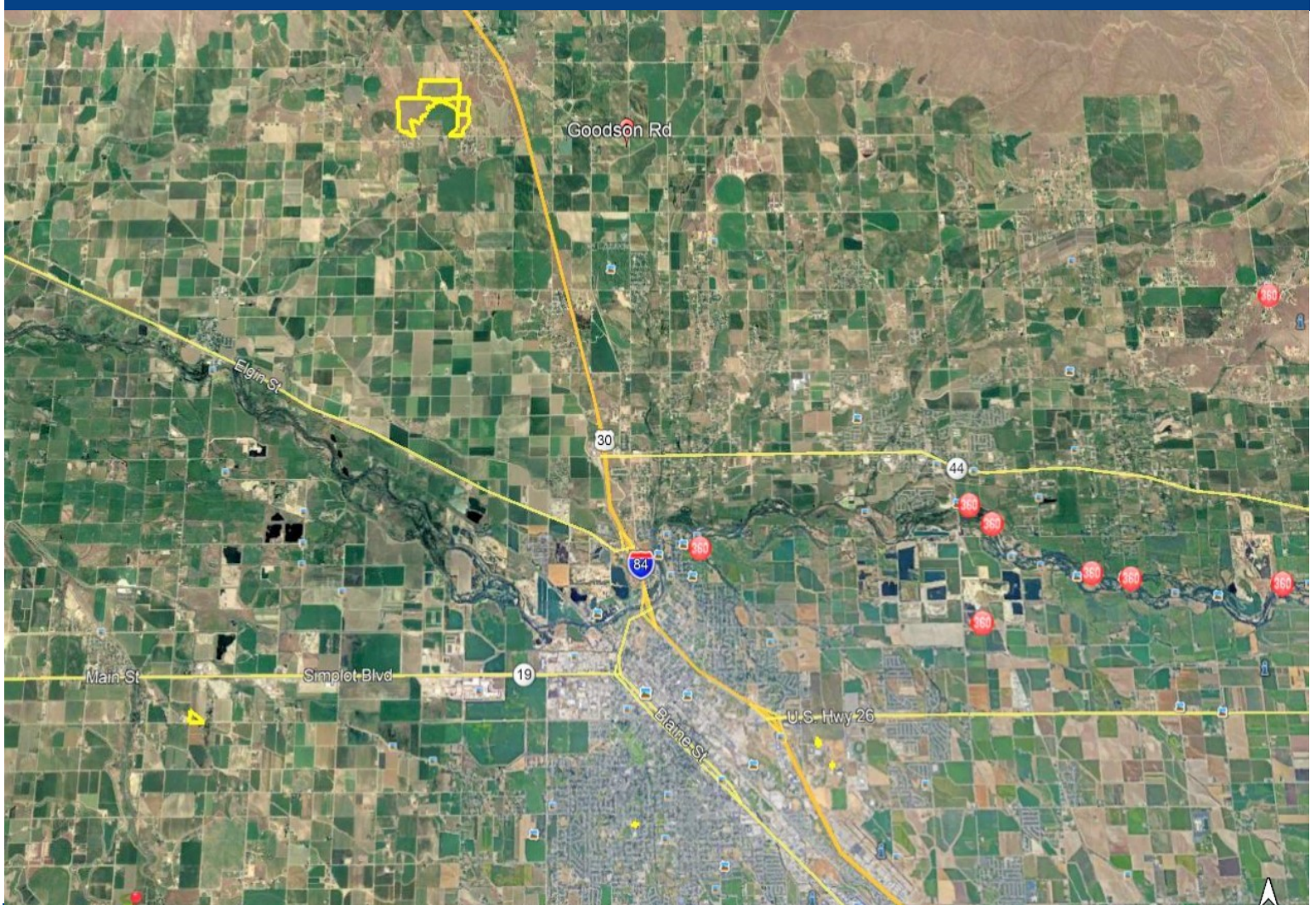
# 221.61 Acres Stadium Subdivision Caldwell, Idaho

## PROPERTY INFORMATION

- ⇒ Parcel Size 221.61 Acres
- ⇒ 106 Lots from .95 Acres to 4.77 Acres
- ⇒ Final Approval Planned for July 2018
- ⇒ Great Location for Country Style Subdivision
- ⇒ Stadium Subdivision Delivered with all Approvals

## DIRECTIONS

From Boise, West on I-84 through Caldwell; Take Exit 25, East to Highway 30, North to Galloway, West to Wagner, North to Goodson Road, West To Property.

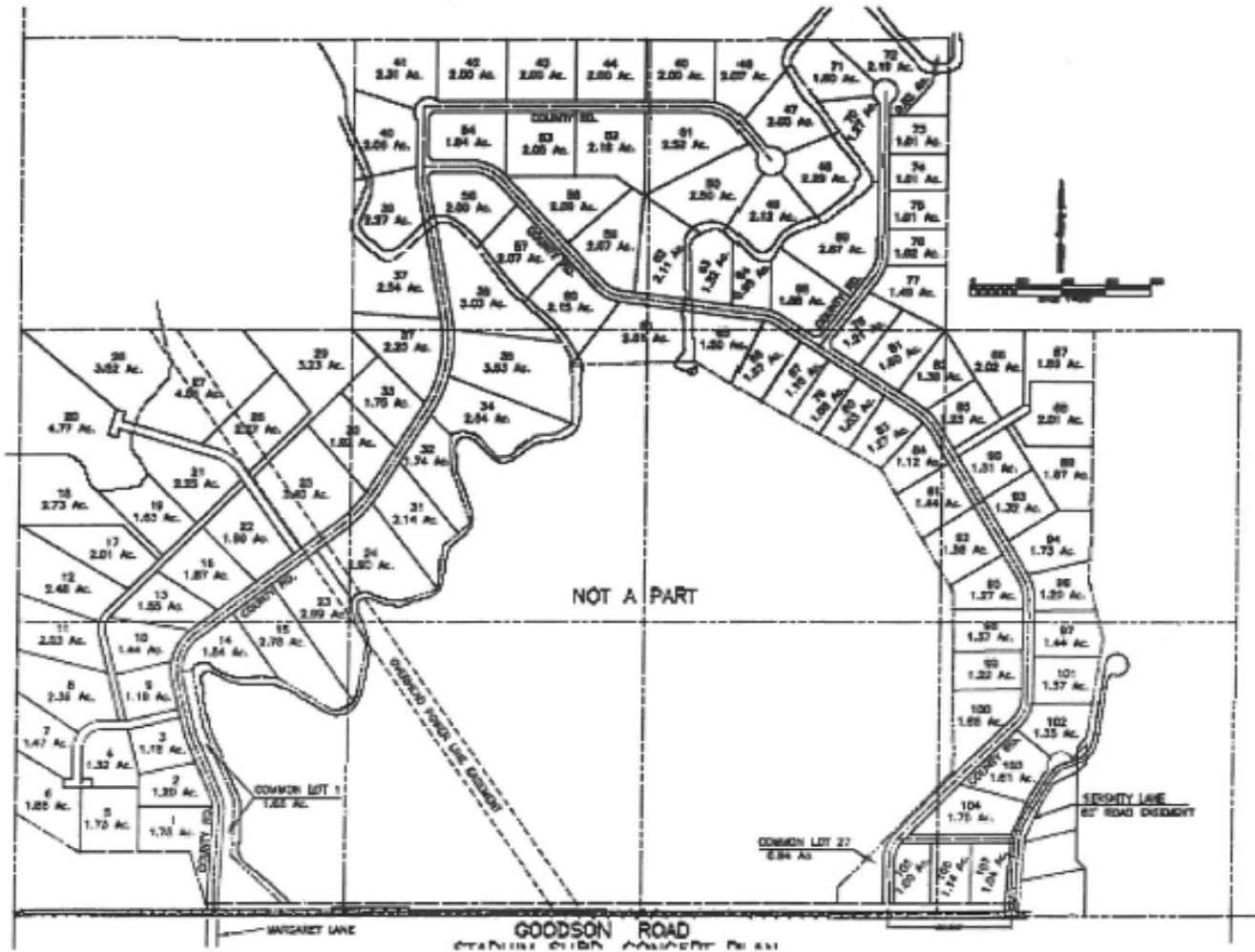


Rick McGraw 208.880.8889 rickmcgraw54@gmail.com

Investment | Industrial | Land | Office | Retail

# 221.61 Acres Stadium Subdivision Caldwell, Idaho

## Proposed 106 Lot Plat



Rick McGraw 208.880.8889 rickmcgraw54@gmail.com

Investment | Industrial | Land | Office | Retail