

**COLDWELL
BANKER**

TOMLINSON GROUP
COMMERCIAL

SAGEWOOD BUSINESS PARK

Woodsage Avenue Meridian, Idaho

THREE NEW OFFICE BUILDINGS FOR LEASE
\$14.50 / NNN



Contact Information

Rick McGraw 280.880.8889 rickmcgraw54@gmail.com

Investment | Industrial | Land | Office | Retail

The information contained herein is from sources deemed reliable. All information should be verified prior to purchase or lease.

THREE SINGLE LEVEL PROFESSIONAL OFFICE BUILDINGS

1660
Woodsage
Avenue

3,192 SF



1672
Woodsage
Avenue

3,587 SF



1678
Woodsage
Avenue

5,201 SF



Contact Information

Rick McGraw 280.880.8889 rickmcgraw54@gmail.com

Investment | Industrial | Land | Office | Retail

Sagewood Business Complex

Woodsage Avenue Meridian, Idaho

Lease Information

Lease Term:	5 Years
Lease Rate:	\$14.50/SF
Lease Type:	NNN
TI Allowance	\$45/SF

Suites From 1,500 SF



Contact Information

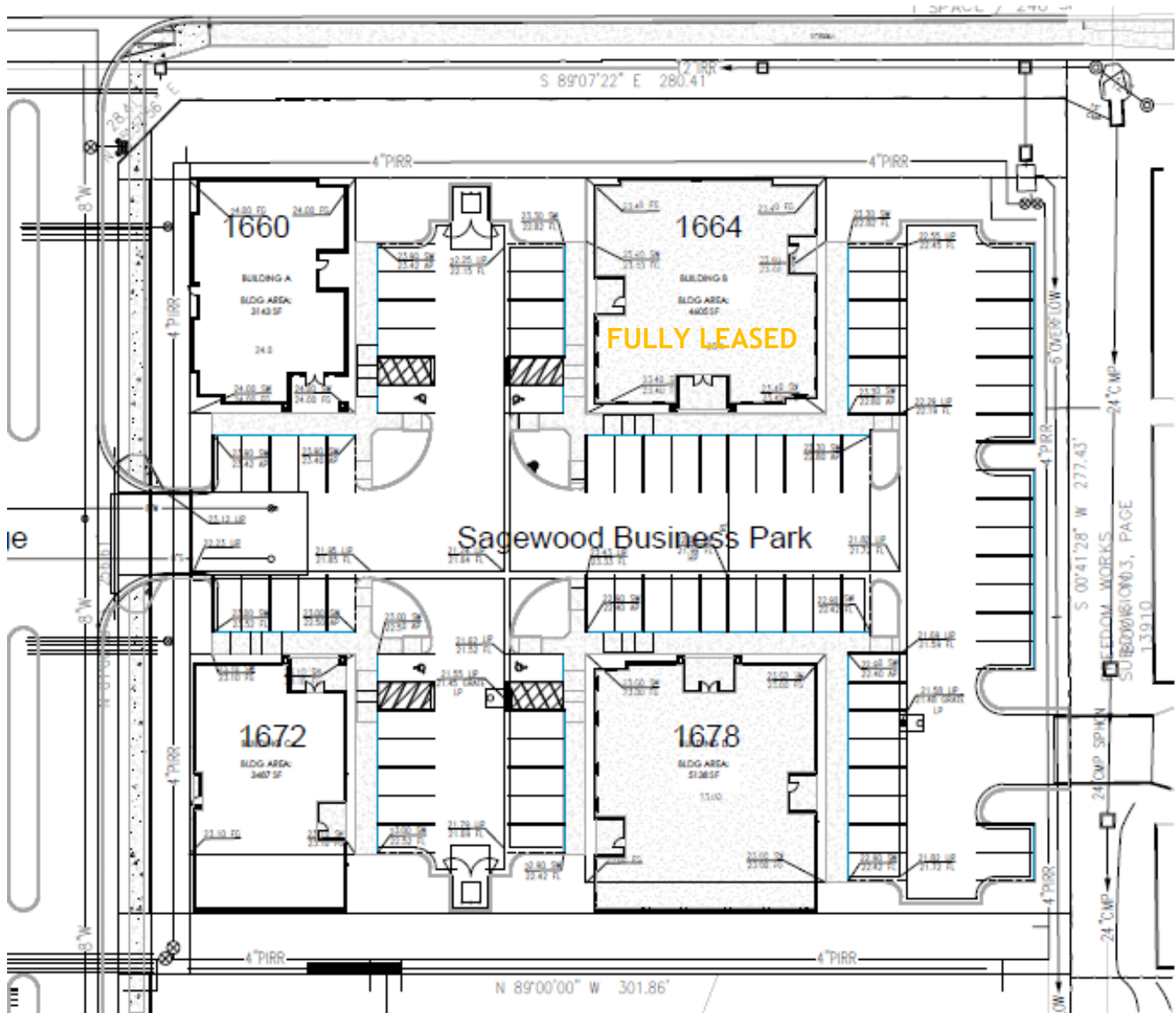
Rick McGraw 280.880.8889 rickmcgraw54@gmail.com

Investment | Industrial | Land | Office | Retail

Sagewood Business Complex

Woodsage Avenue Meridian, Idaho

Directions From 1-84; South on Meridian Road, West on Overland to Woodsage Avenue.



Contact Information

Rick McGraw 280.880.8889 rickmcgraw54@gmail.com

Investment | Industrial | Land | Office | Retail