

SAGEWOOD OFFICE BUSINESS PARK

Woodsage Avenue | Meridian, Idaho



FOR LEASE \$14.50/SF NNN



Four new office buildings

Contact Information

RICK MCGRAW • 208.880.8889 • RICKMCGRAW54@GMAIL.COM

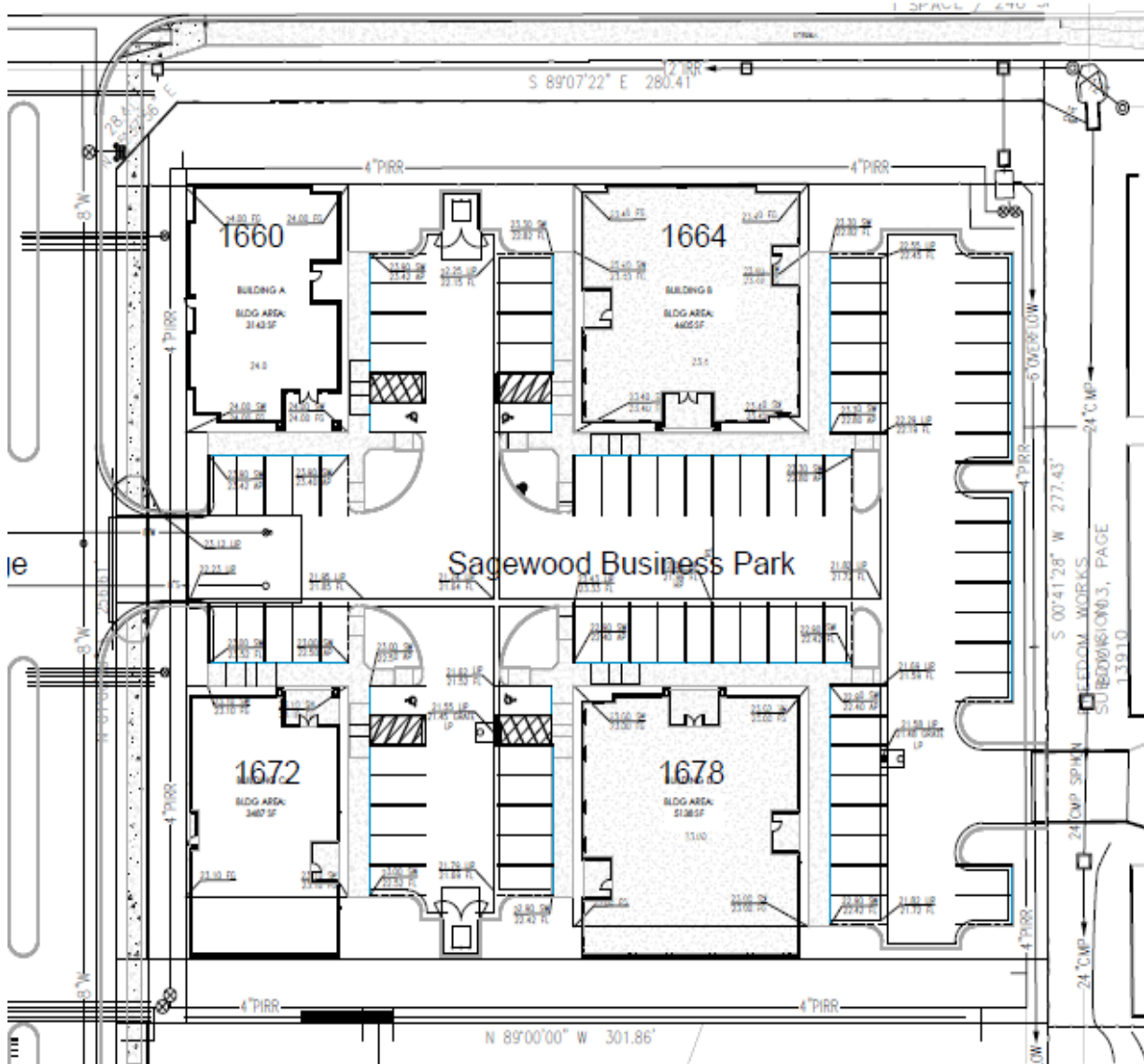
Investment | Industrial | Land | Office | Retail

Coldwell Banker
Tomlinson Group

SAGEWOOD OFFICE BUSINESS PARK

Woodsage Avenue | Meridian, Idaho

Sagewood Office Plat



Rick McGraw ♦ 208.880.8889 ♦ RICKMCGRAW54@gmail.com

Investment | Industrial | Land | Office | Retail

Coldwell Banker
 Tomlinson Group

(4) Single Level Professional Office Buildings

Building Information

1660 Woodsage	3,192SF
1664 Woodsage	4,547SF
1672 Woodsage	3,587SF
1678 Woodsage	5,201SF

Includes \$45/SF Tenant Improvement Allowance

Directions From I-84, South on Meridian Road, West on Overland to Woodsage

Lease Information

Lease Term:	5 years
Lease Rate:	\$14.50/SF
Lease Type:	NNN
TI Allowance:	\$45/SF
Suites from	1,500SF



Rick McGraw ♦ 208.880.8889 ♦ RICKMCGRAW54@gmail.com