

SAGEWOOD OFFICE BUSINESS PARK

Woodsage Avenue | Meridian, Idaho



FOR SALE \$675,000 to \$1,080,000



Contact Information

RICK MCGRAW • 208.880.8889 • RICKMCGRAW54@GMAIL.COM

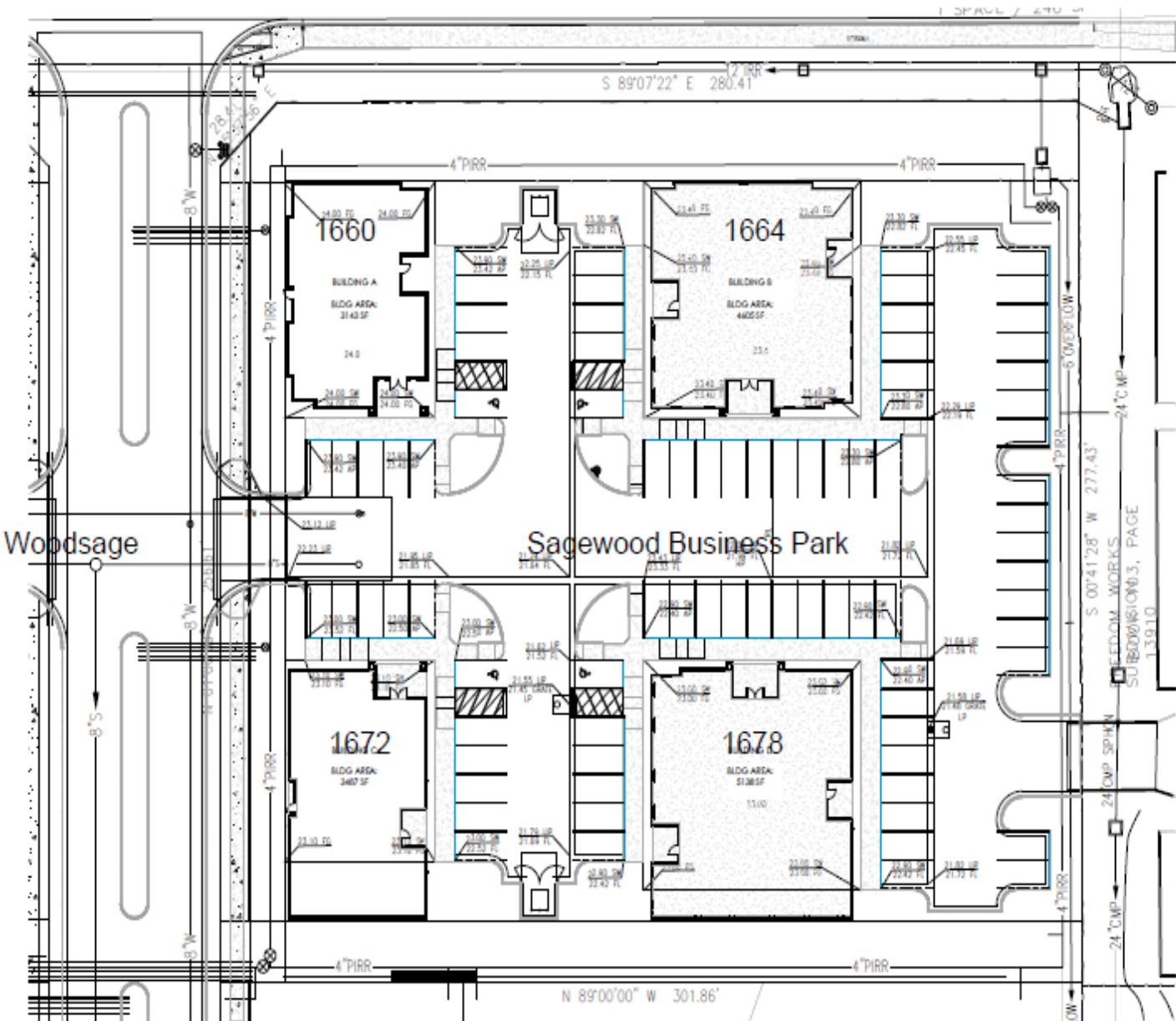
Investment | Industrial | Land | Office | Retail

Coldwell Banker
Tomlinson Group

SAGEWOOD OFFICE BUSINESS PARK

Woodsage Avenue | Meridian, Idaho

Sagewood Office Plat



Rick McGraw ♦ 208.880.8889 ♦ RICKMCGRAW54@gmail.com

Investment | Industrial | Land | Office | Retail

Coldwell Banker
 Tomlinson Group

(4) Single Level Professional Office Buildings

Building Information

1660 Woodsage	3,259SF	\$ 675,000
1664 Woodsage	4,663SF	\$ 965,000
1672 Woodsage	3,587SF	\$ 745,000
1678 Woodsage	5,201SF	\$1,080,000
Includes \$45/SF Tenant Improvement Allowance		

Directions From I-84, South on Meridian Road, West on Overland to Woodsage

Lease Information

Lease Term: 5 years
 Lease Rate: \$14.50/SF
 Lease Type: NNN
 TI Allowance: \$45/SF

 Suites from 1,500SF



Rick McGraw ♦ 208.880.8889 ♦ RICKMCGRAW54@gmail.com