

**COLDWELL  
BANKER**

TOMLINSON GROUP  
COMMERCIAL

# HARD CORNER PARCEL

3290 East Amity | Meridian Idaho



## Property Information

Parcel Size: 1.2 acres

Zoning: RUT

**Price includes existing house and outbuildings**

Parcel Number: R0539007262

**For Sale: \$335,000**

## Contact Information

RICK MCGRAW • 208.880.8889 • RICKMCGRAW54@GMAIL.COM

Investment | Industrial | Land | Office | Retail

Eagle • 1173 E Winding Creek Dr • 208.639.1881

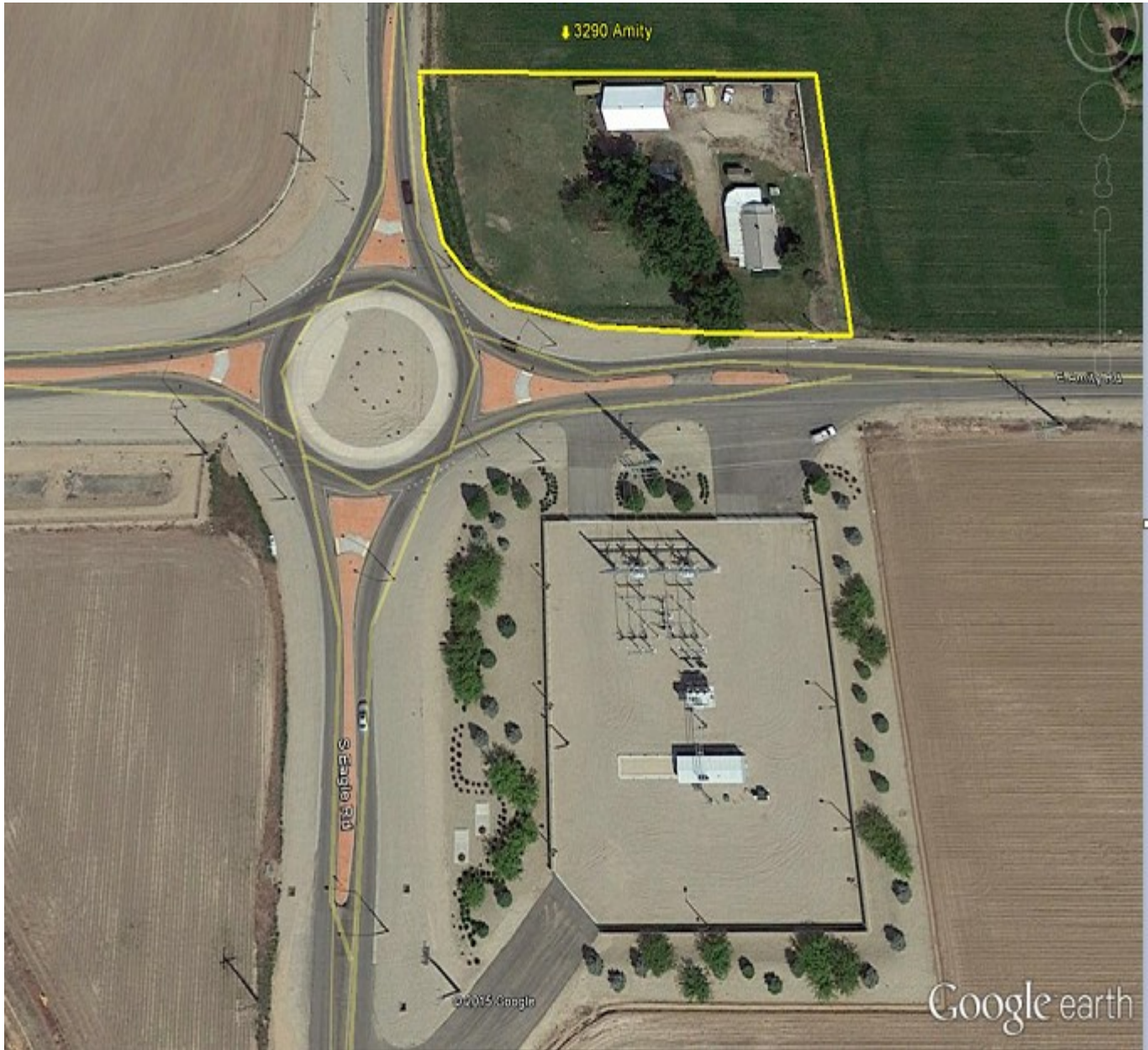
Coldwell Banker  
Tomlinson Group  
COMMERCIAL

The information contained herein is from sources deemed reliable. All information should be verified prior to purchase or lease.

# 1.2 ACRE PARCEL

3290 East Amity | Meridian Idaho

## Area Aerial and Round-About



RICK MCGRAW • 208.880.8889 • RICKMCGRAW54@GMAIL.COM

Investment | Industrial | Land | Office | Retail

Eagle • 1173 E Winding Creek Dr • 208.639.1881

Coldwell Banker  
Tomlinson Group  
COMMERCIAL

The information contained herein is from sources deemed reliable. All information should be verified prior to purchase or lease.

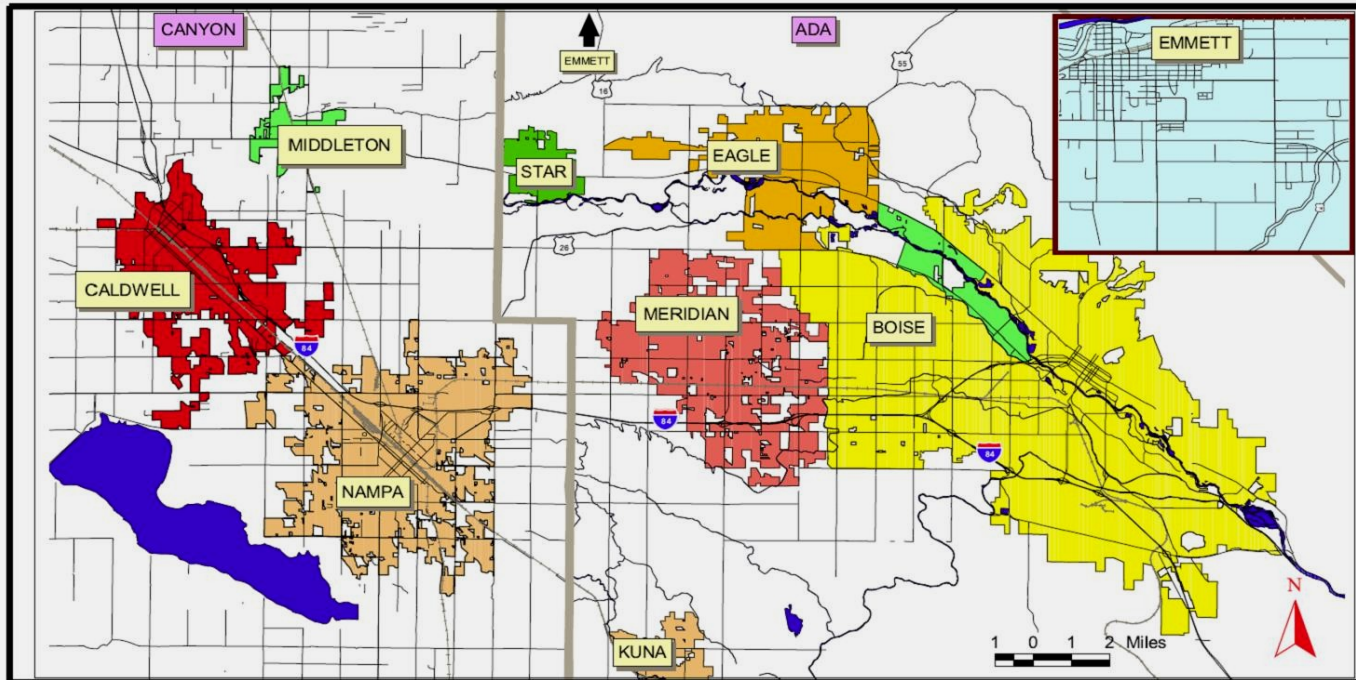


**COLDWELL  
BANKER**

TOMLINSON GROUP  
COMMERCIAL

# 1.2 ACRE PARCEL 3290 EAST AMITY MERIDIAN IDAHO

## Boise Valley Map



### Listing Comments

**\$335,000**

(1.2 acres)

Excellent location for Future Development  
Hard Corner with Round-About  
Price includes existing house and outbuildings

RICK MCGRAW • 208.880.8889 • RICKMCGRAW54@GMAIL.COM

Investment | Industrial | Land | Office | Retail

Eagle • 1173 E Winding Creek Dr • 208.639.1881

Coldwell Banker  
Tomlinson Group  
COMMERCIAL